

A

AMANDA PAIOTTI

ITALIAN MARBLE ATELIER



1

STOCKYARD and MATERIALS

2

JOB'S SPECIFICATION

3

LIGHTENING STONE

4

TRANSLUCENT and PLUG-IN SYSTEM

5

BOOK MATCHING

6

STEPS OF PRODUCTION

STOCKYARD and MATERIALS

STOCKYARD
and
MATERIALS

STOCKYARD and MATERIALS

STOCKYARD and MATERIALS

STOCKYARD and
MATERIALS

STOCKYARD and MATERIALS



no 1 has our
Stockyard

STOCKYARD and MATERIALS







be boom 2
our phase

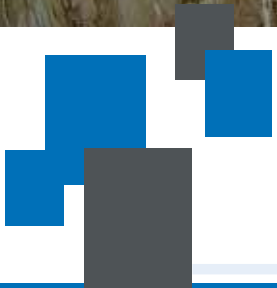


CALACATTA VAGLI





BRECCIA AURORA







PIETRA LEONARDO





SAMARCANDA



CREMA MARFIL



TIGER ONYX



TRAVERTINO NAVONA

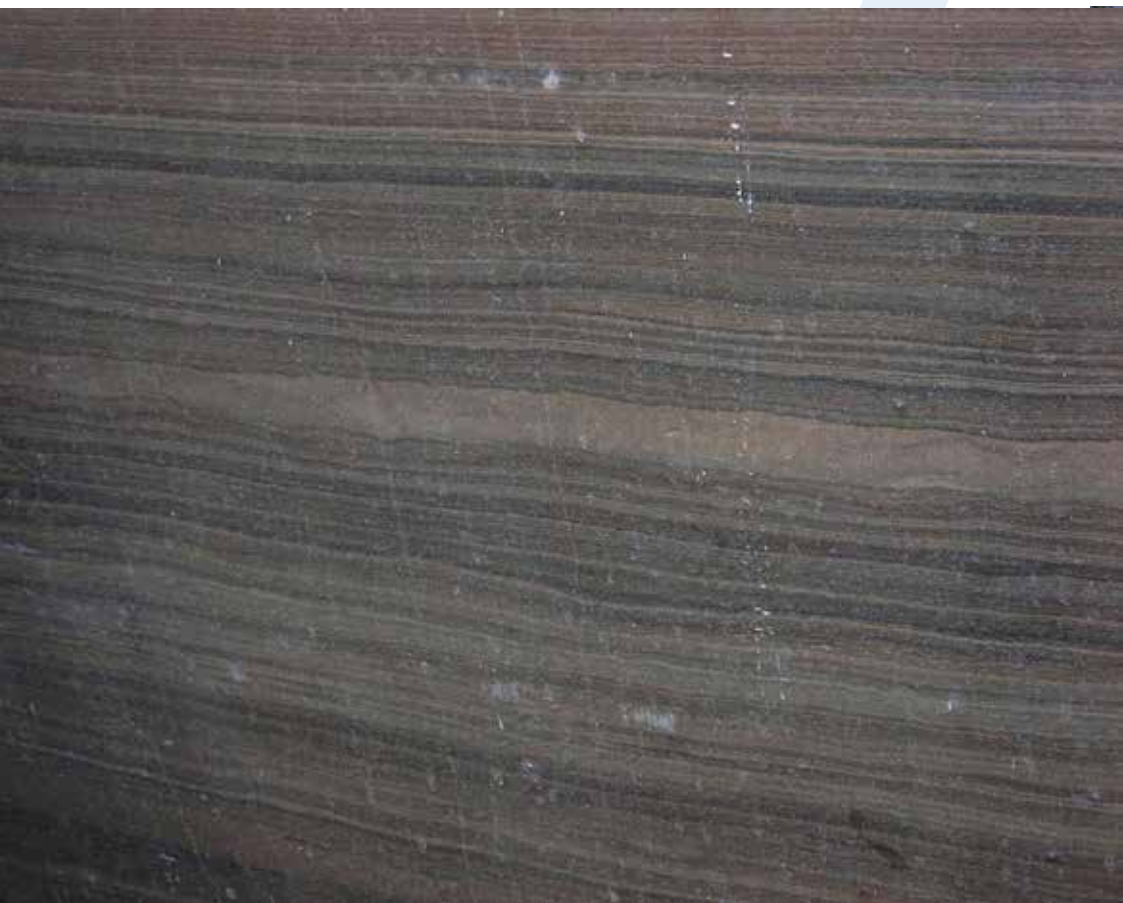


NARANJA ONYX





HONEY ONYX





EMPERADOR DARK

3000s of
Axioms

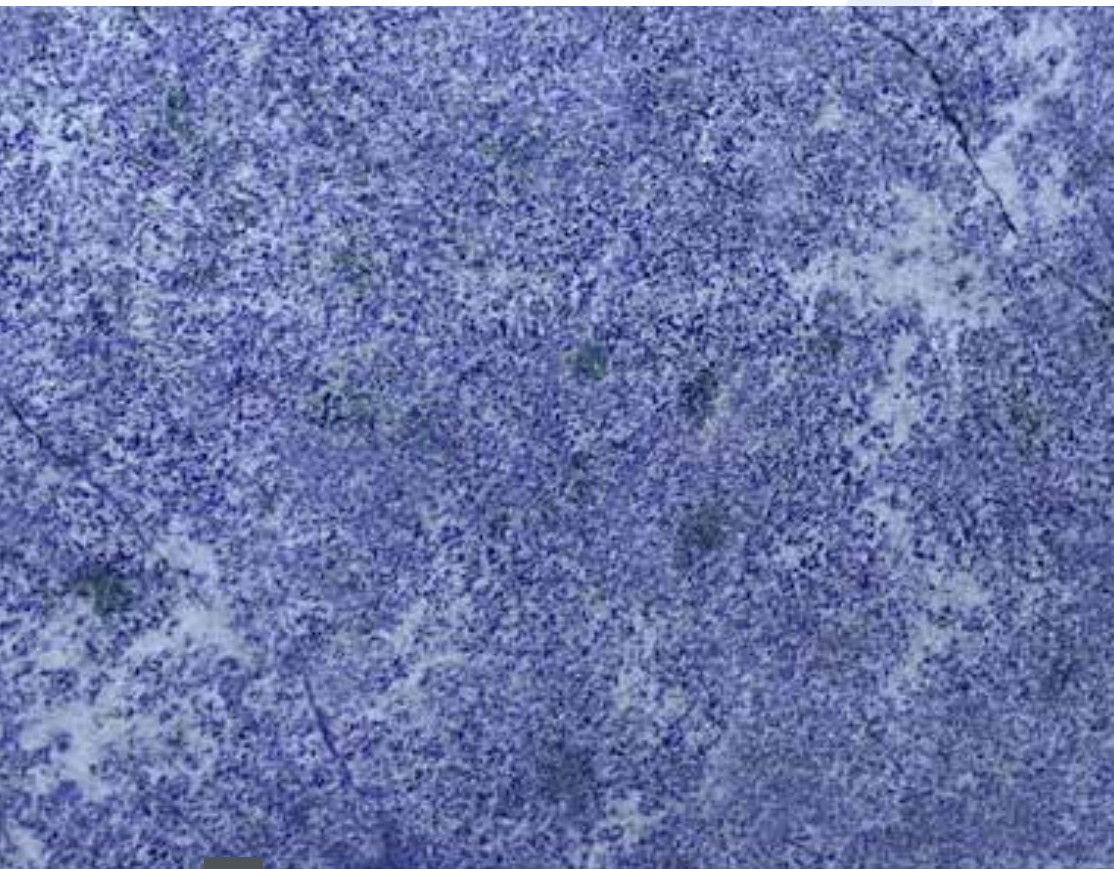


LIGHT AZUL MACAUBAS





AZUL MACAUBAS

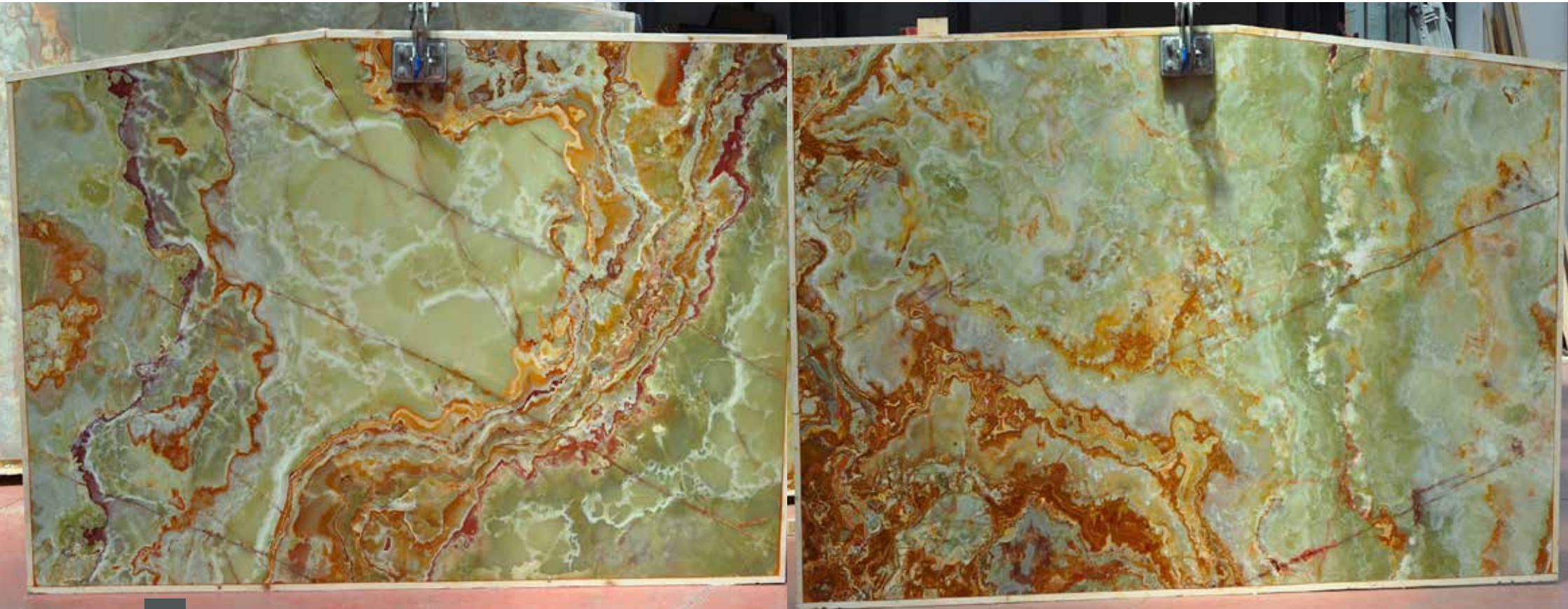


BLUE BAHIA



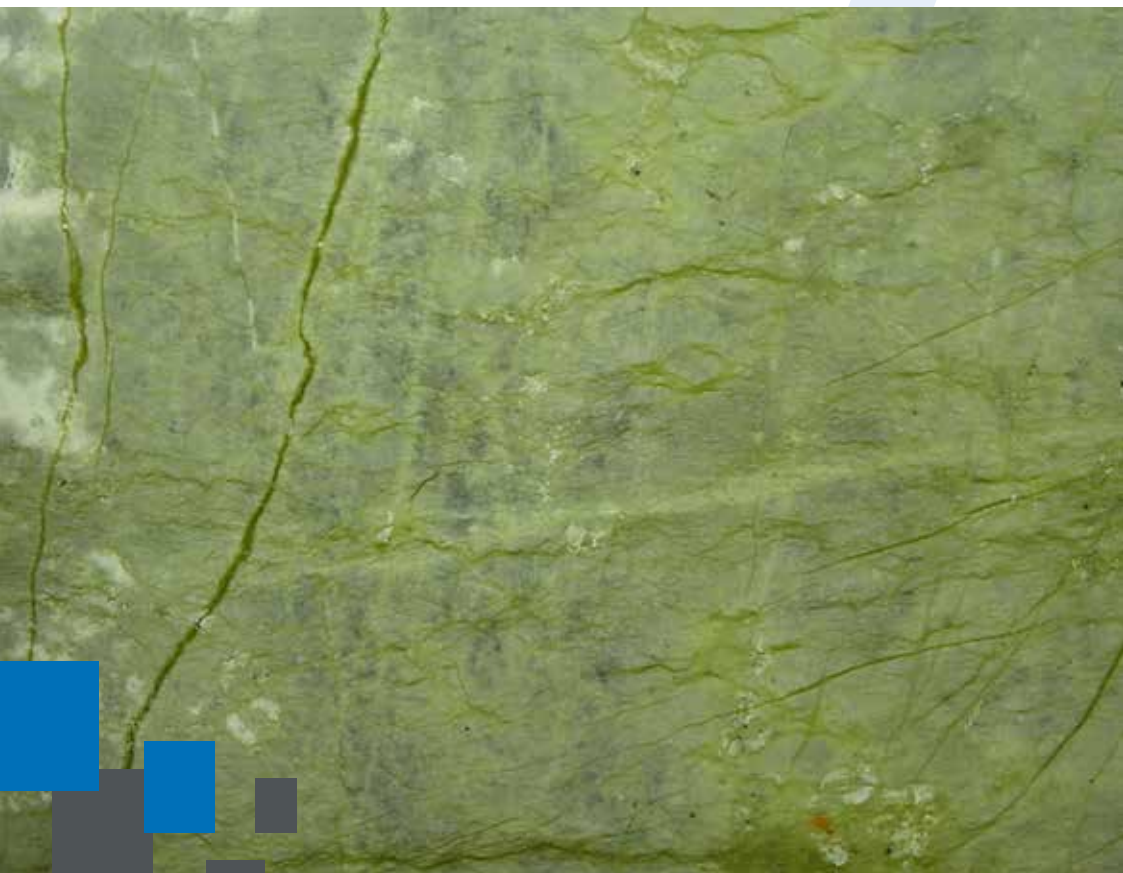
GREEN ONYX IRAN





GREEN ONYX PAKISTAN





GIADA GREEN



RED ONYX



ROSSO FRANCIA



ROSSO LEVANTE

at Bernice
4 you



NERO MARQUINA

JOB'S
SPECIFICATION

JOB'S
SPECIFICATION

2

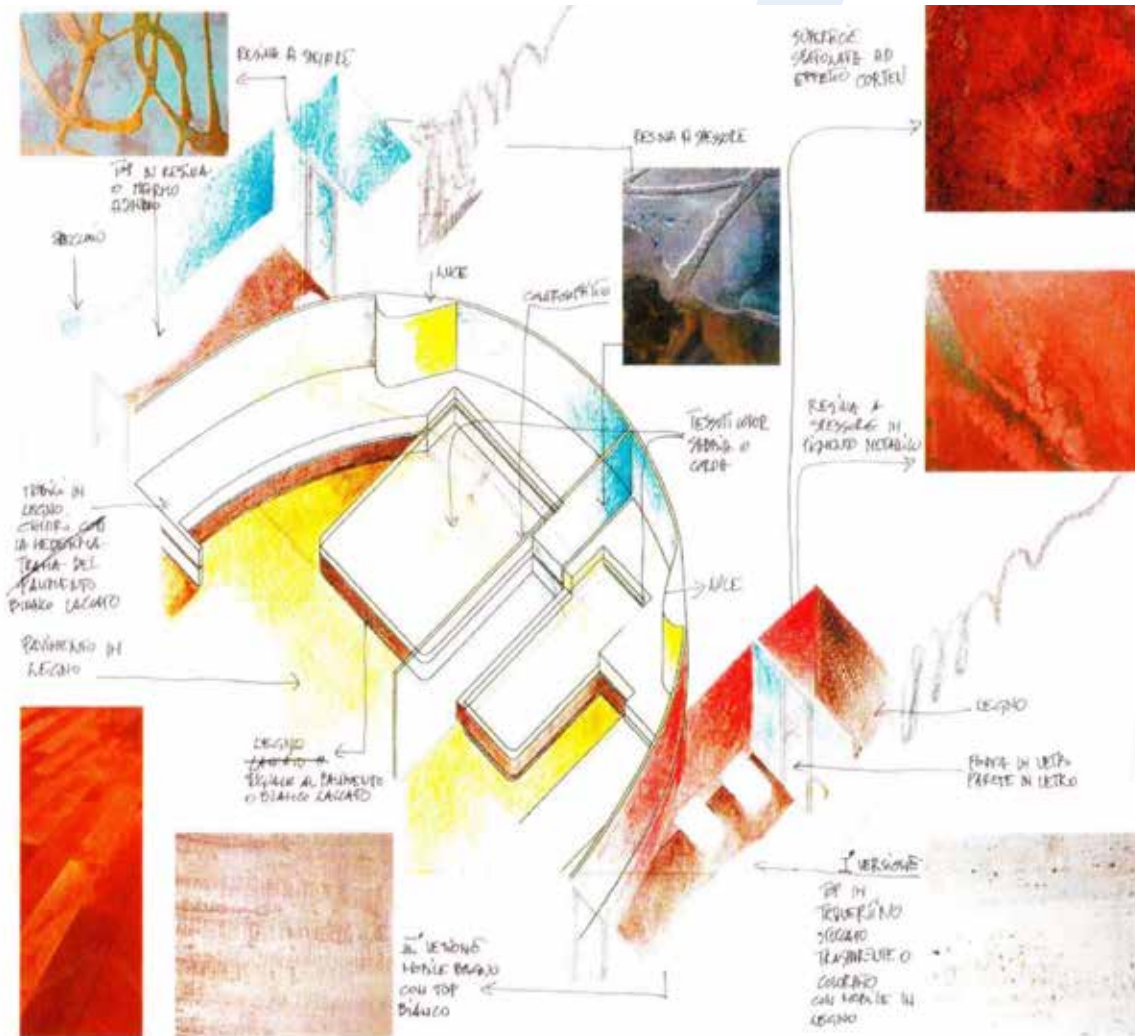
JOB'S
SPECIFICATION

JOB'S SPECIFICATION

JOB'S SPECIFICATION

JOB'S SPECIFICATION

JOB'S SPECIFICATION



LIGHTENING STONE

LIGHTENING
STONE

LIGHTENING STONE

3

LIGHTENING STON

LIGHTENING
STONE

LIGHTENING
STONE

LIGHTNING STONE



you get Ser
of WA

TRANSLUCENT SYSTEM

TRANSLUCENT SYSTEM

**TRANSLUCENT
SYSTEM**

4

TRANSLUCENT SYSTEM

TRANSLUCENT SYSTEM

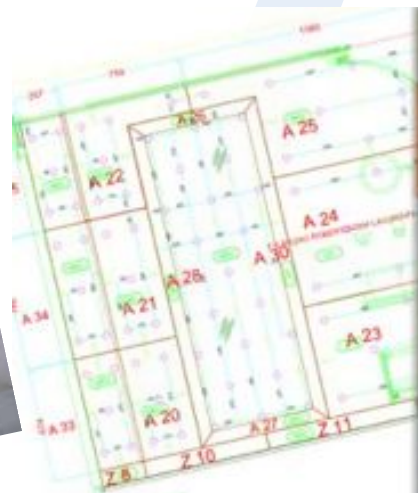
**TRANSLUCENT
SYSTEM**



TRANSLUCENT SYSTEM



any time,
but 6 times
is better



BOOKMATCHING

BOOKMATCHING

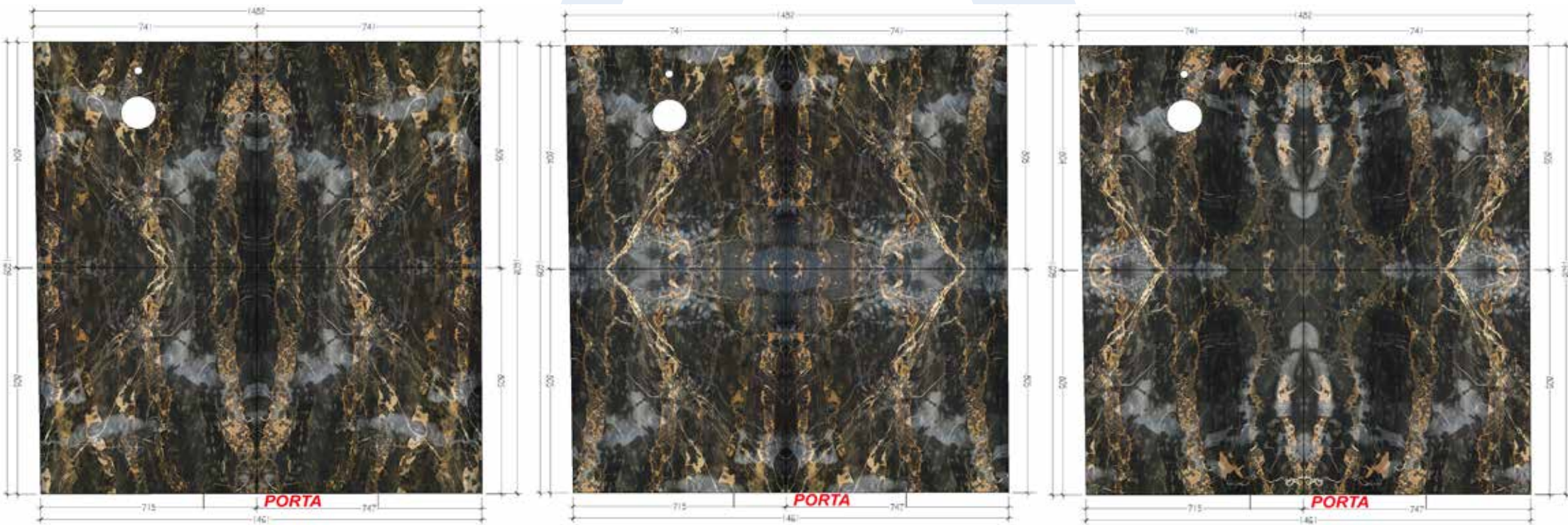
BOOKMATCHING

BOOKMATCHING

5

BOOKMATCHING

BOOK MATCHING



da non missa

STEPS OF PRODUCTION

**STEPS OF
PRODUCTION**



STEPS OF PRODUCTION

**STEPS OF
PRODUCTION**

MARBLE SELECTION

TAKE OFF OF SIZES

EXECUTIVE DRAWING

EXECUTIVE RENDERING

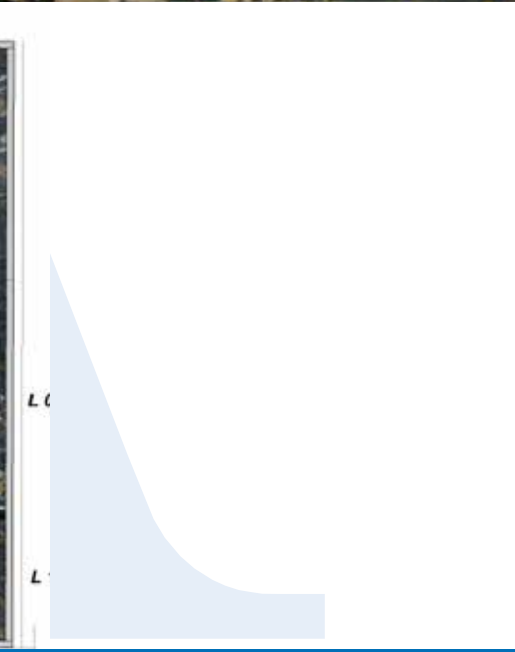
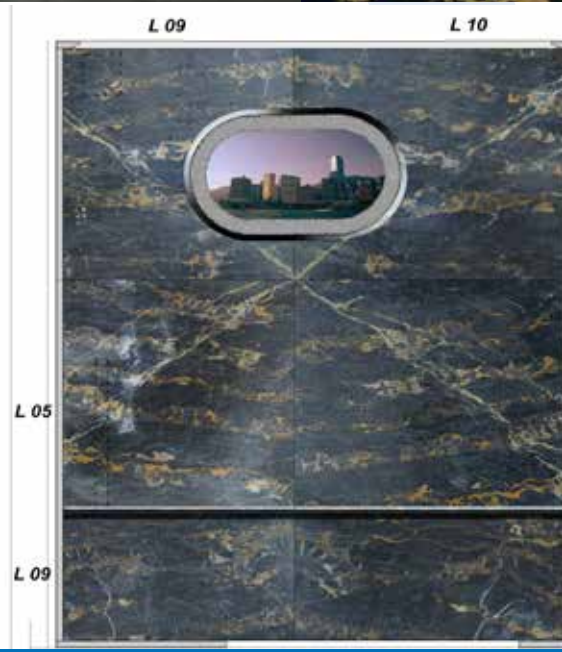
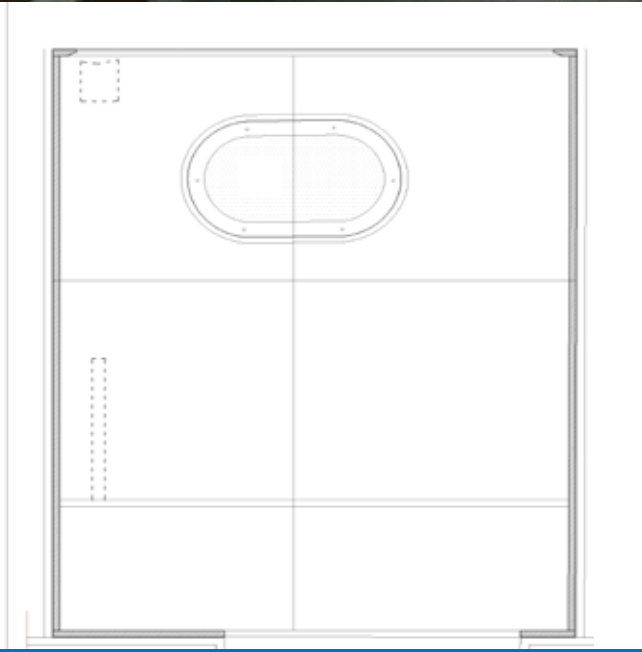
NESTING

PRE-INSTALLATION

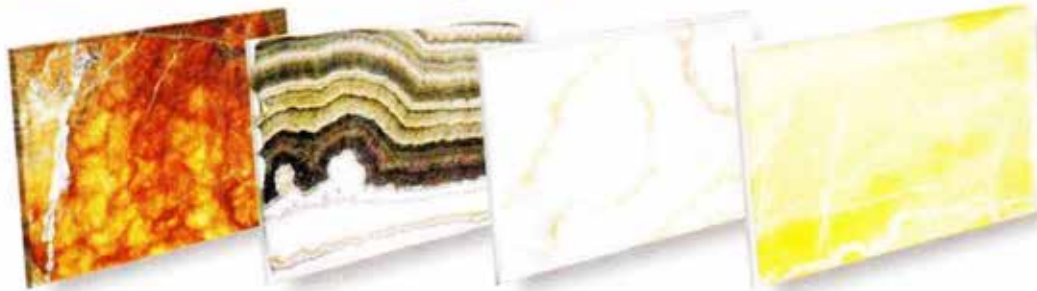
INSTALLATION



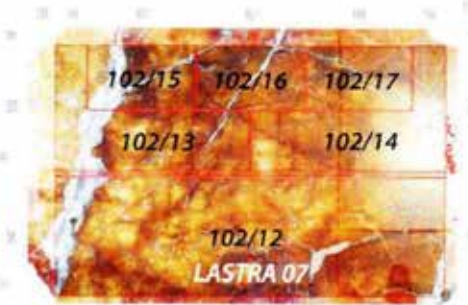
TAKE OFF OF SIZES



It is possible to have a choice within a wide range of materials of different types or colors, and obtaining a very large amount of finishing surface.



LASTRA 07



Project 52

ONICE AMBRA

5-12-2008

102

6-12

102 RIVESTIMENTO

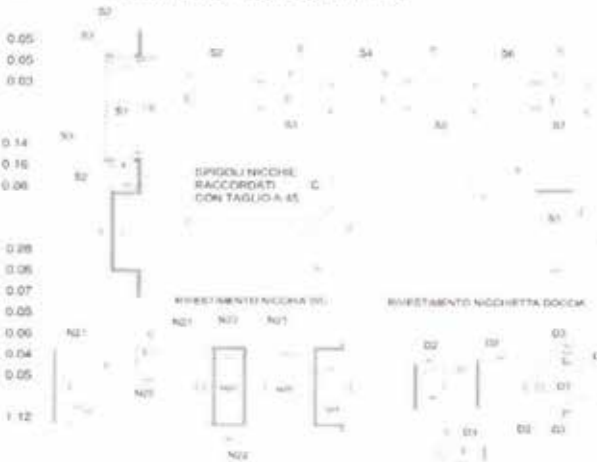
RIVESTIMENTO NICCHIE SEZIONE O-O

DESCRIZIONE	Q	L	P	S	Q
D1	1	335	185	1.8	0.05
D2	2	300	85	1.8	0.05
D3	2	185	85	1.8	0.03

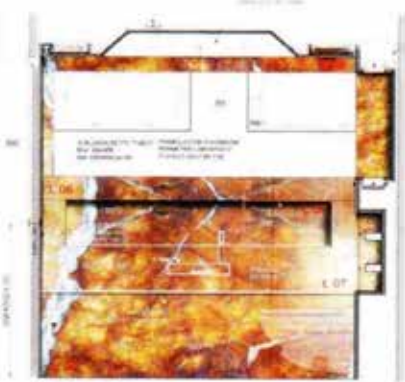
DESCRIZIONE	Q	L	P	S	Q
N20	1	490	155	1.8	0.14
N21	2	490	163	1.8	0.16
D3	2	190	163	1.8	0.06

DESCRIZIONE	Q	L	P	S	Q
S1	2	690	208	1.8	0.28
S2	2	728	40	1.8	0.06
S3	2	728	46	1.8	0.07
S4	2	675	40	1.8	0.05
S5	2	675	46	1.8	0.06
S6	2	490	40	1.8	0.04
S7	2	490	40	1.8	0.05

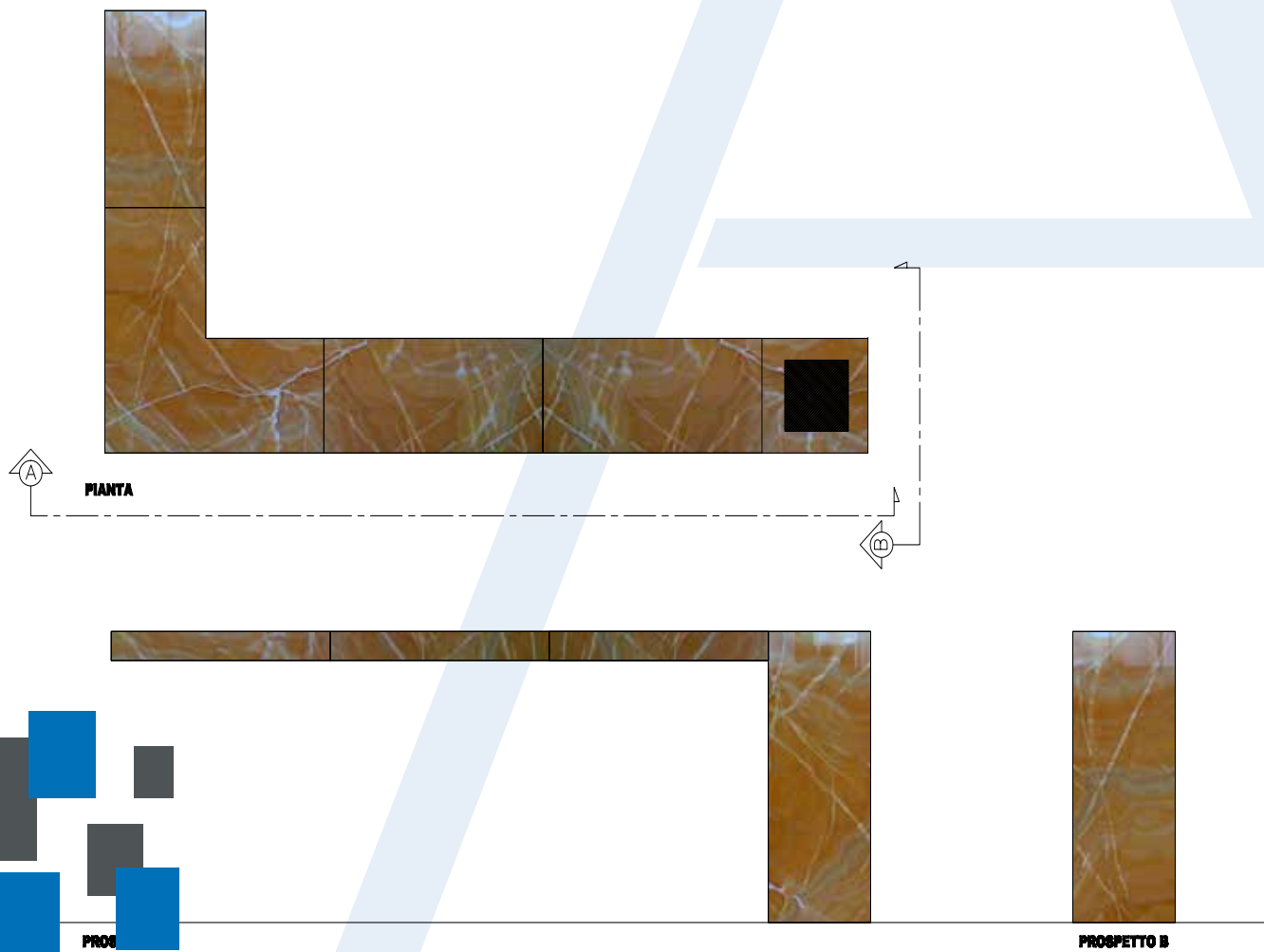
24

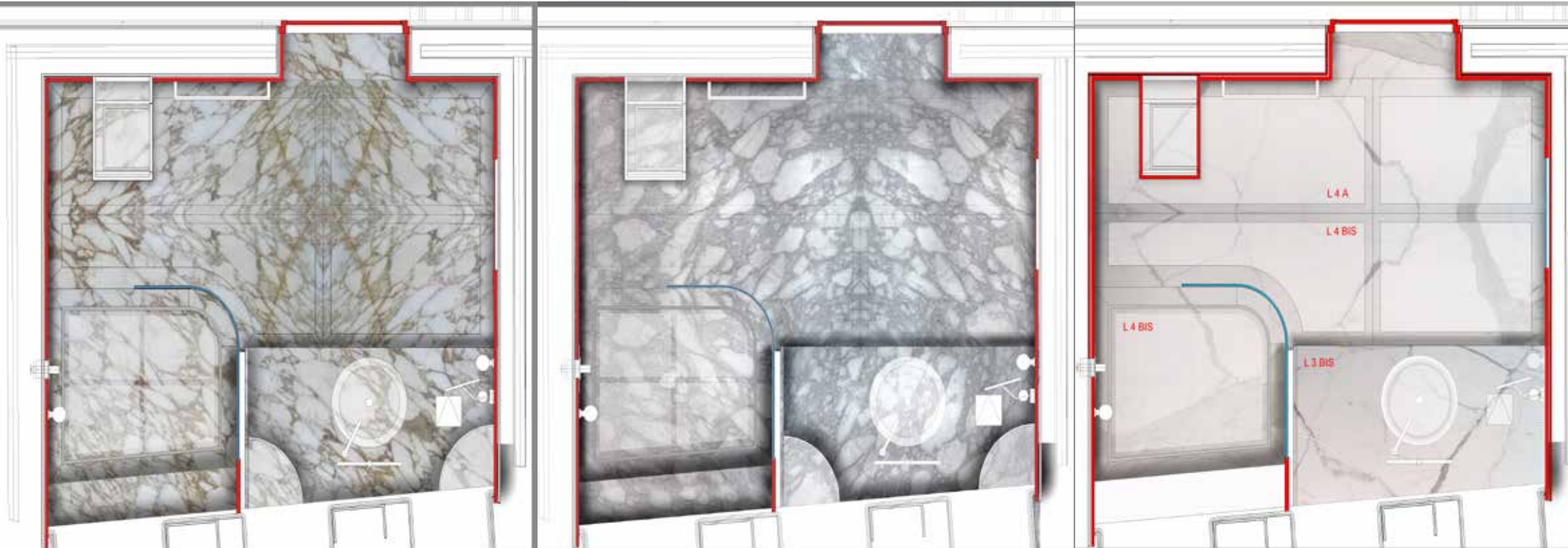


According to specifications and following surveys on board will be prepared cutting lists corresponding to the different cutting rendered images agreed with the owner



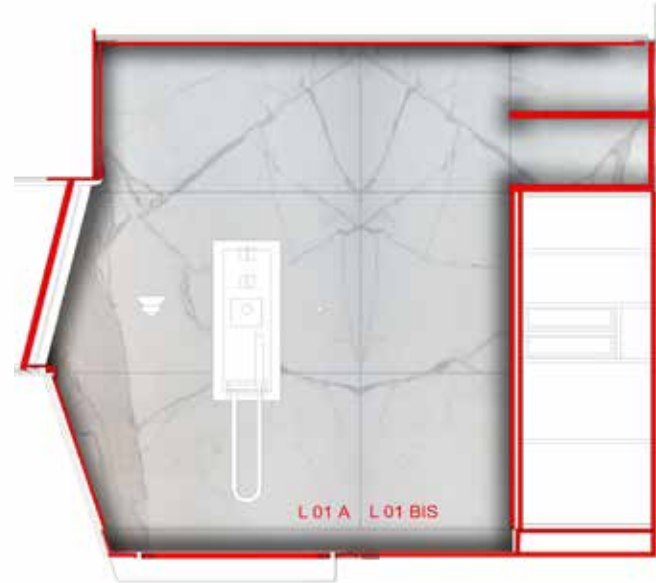
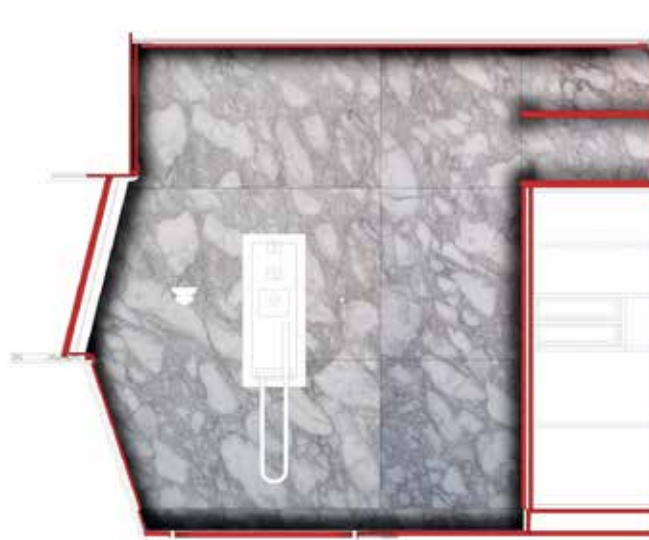
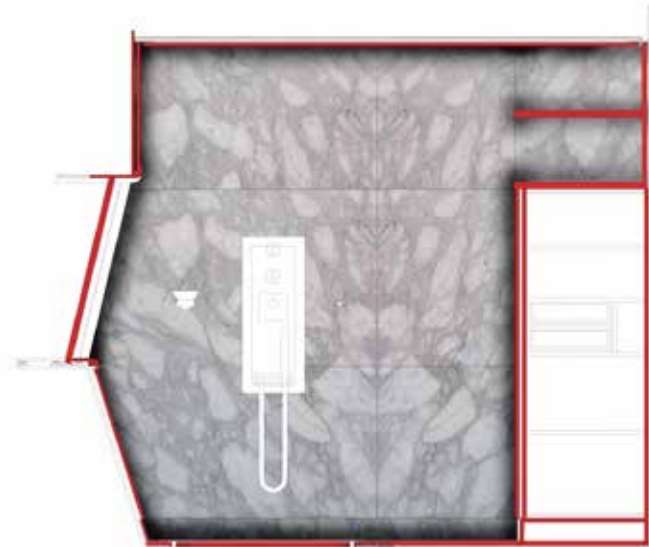
SEZIONE G-G
 Vista verso Murata

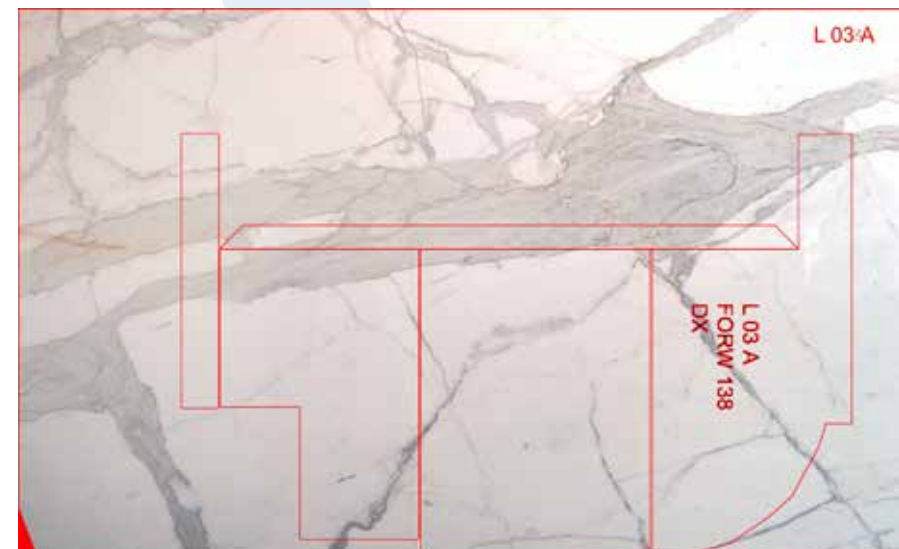
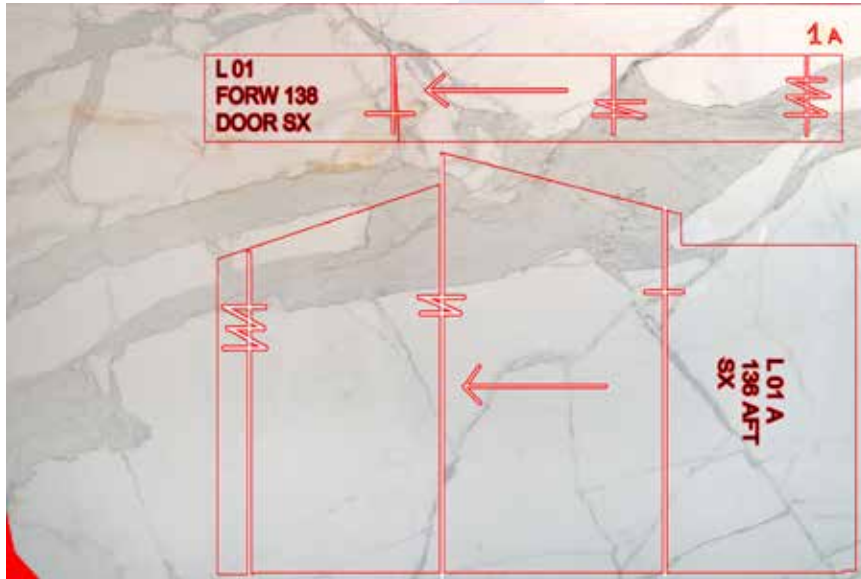




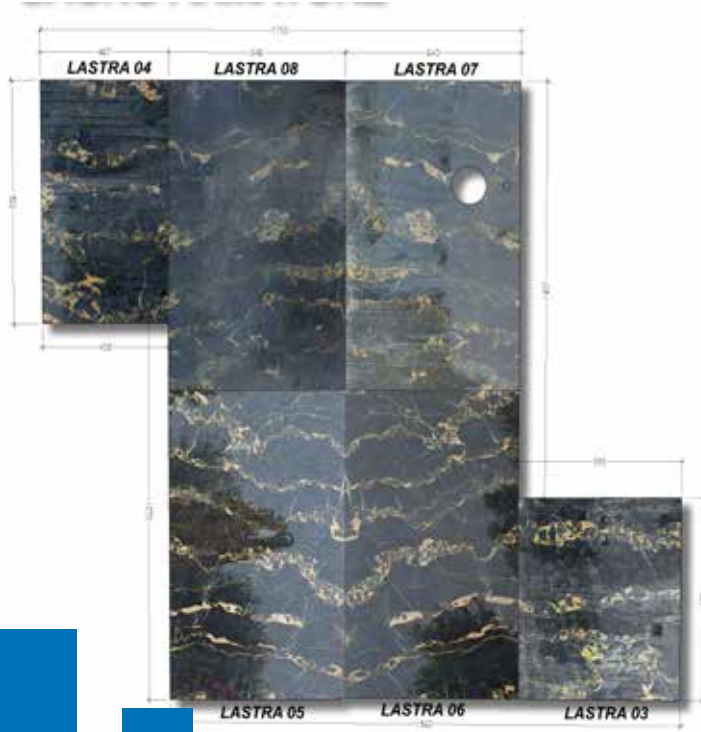
we would be
at the hub

EXECUTIVE RENDERING







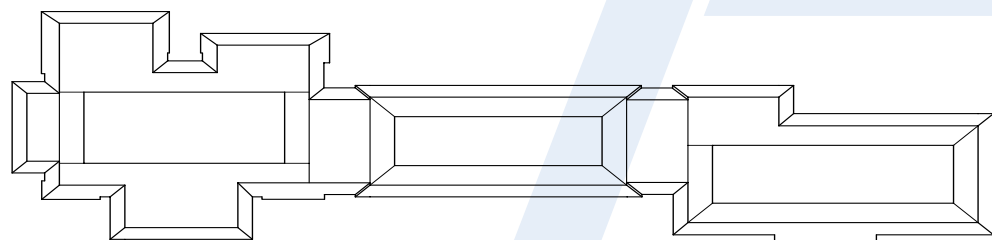


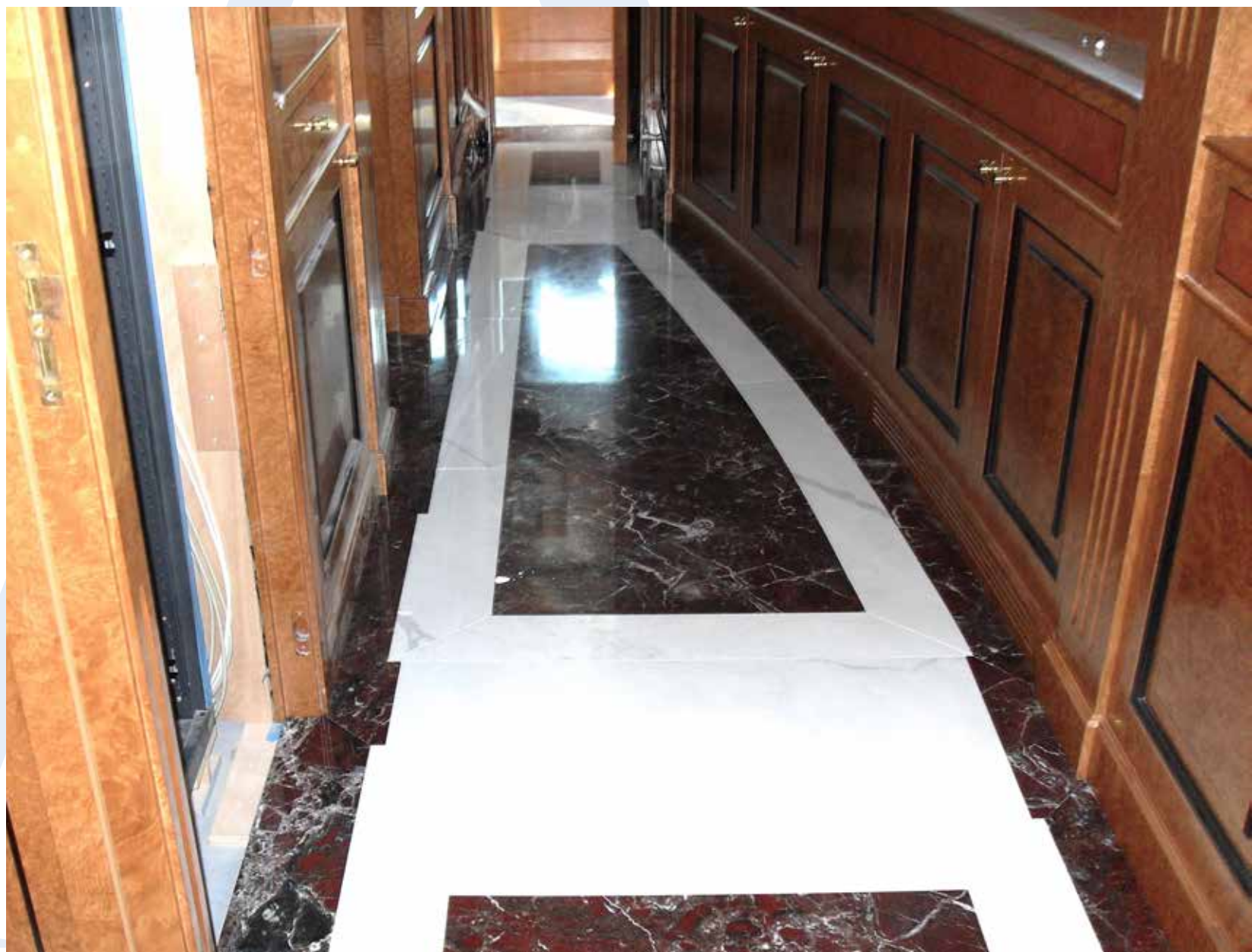
PRE-INSTALLATION



not only for
femia

PRE-INSTALLATION









A

AMANDA PAIOTTI

ITALIAN MARBLE ATELIER

Amanda Paiotti s.r.l. soc unip
Via Enrico Pea, 30
55045 Marina di Pietrasanta (Lucca)
Italy

Tel. +39 0584 22938
info@amandapaiotti.it
www.amandapaiotti.it